

Switch without escutcheon plate,  
without ball handle

With double contacts and removeable cam  
Maximum 7-0-7 oder 0-16 steps  
Rating see sheet 1/1

Number of double contact elements	Without spring return		With spring return	
	Type	EUR	Type	EUR
1	NS 001		NS 001 R *	
2	NS 002		NS 002 R	
3	NS 003		NS 003 R	
4	NS 004		NS 004 R	
5	NS 005		NS 005 R	
6	NS 006		NS 006 R	
7	NS 007		NS 007 R	
8	NS 008		NS 008 R	
9	NS 009		NS 009 R	
10	NS0010		NS0010 R	

Switch  
with escutcheon 72x72 mm  
with chrome handle 1)

1	NS 001 F		NS 001 FR *	
2	NS 002 F		NS 002 FR	
3	NS 003 F		NS 003 FR	
4	NS 004 F		NS 004 FR	
5	NS 005 F		NS 005 FR	
6	NS 006 F		NS 006 FR	
7	NS 007 F		NS 007 FR	
8	NS 008 F		NS 008 FR	
9	NS 009 F		NS 009 FR	
10	NS0010 F		NS0010 FR	

Switch  
with escutcheon 96x96 mm  
with chrome handle 1)

1	NS 001 FA		NS 001 FAR	
2	NS 002 FA		NS 002 FAR	
3	NS 003 FA		NS 003 FAR	
4	NS 004 FA		NS 004 FAR	
5	NS 005 FA		NS 005 FAR	
6	NS 006 FA		NS 006 FAR	
7	NS 007 FA		NS 007 FAR	
8	NS 008 FA		NS 008 FAR	
9	NS 009 FA		NS 009 FAR	
10	NS0010 FA		NS0010 FAR	

Switch  
with waterproofed escutcheon plate  $\varnothing$ 70 mm  
with chrome handle 1)

1	NS 001 FOD		NS 001 FODR	
2	NS 002 FOD		NS 002 FODR	
3	NS 003 FOD		NS 003 FODR	
4	NS 004 FOD		NS 004 FODR	
5	NS 005 FOD		NS 005 FODR	
6	NS 006 FOD		NS 006 FODR	
7	NS 007 FOD		NS 007 FODR	
8	NS 008 FOD		NS 008 FODR	
9	NS 009 FOD		NS 009 FODR	
10	NS0010 FOD		NS0010 FODR	

Cast enclosure IP56  
with chrome handle

1	NS 006 GA 1		NS 006 GAR 1 *	
2	NS 006 GA 2		NS 006 GAR 2	
3	NS 006 GA 3		NS 006 GAR 3	
4	NS 006 GA 4		NS 006 GAR 4	
5	NS 006 GA 5		NS 006 GAR 5	
6	NS 006 GA 6		NS0010 GAR 6	
7	NS0010 GA 7		NS0010 GAR 7	
8	NS0010 GA 8			

EUR

Engraving:  
Each symbol  
Each word

EUR

\* Only 1-0-1 steps  
1) with knob less  
Additional: friction brake

Potentiometer attachment see sheet 14/1 + 14/2  
Encoder see sheet 15/11...



**Spohn-Burkhardt** GmbH & Co.  
D-89143 Blaubeuren/Germany Mauergasse 5

Local contact Fon:+86 21 50450977  
Gubin Fax:+86 21 50458162  
enquire@spobu.com.cn

Meisterschalter  
NS00

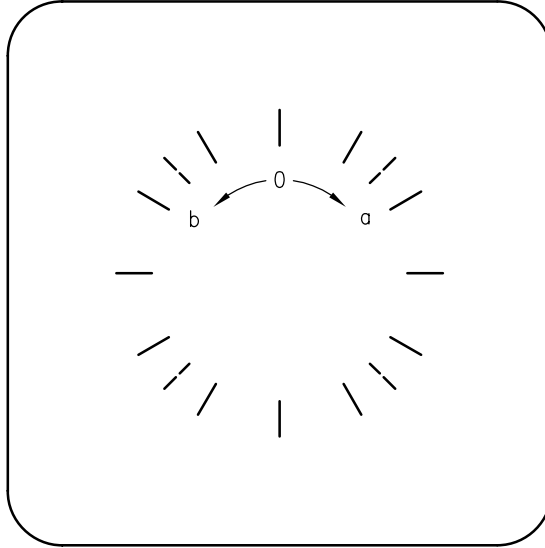
Controller  
NS00

Tag:  
Day:

Name:  
Name:

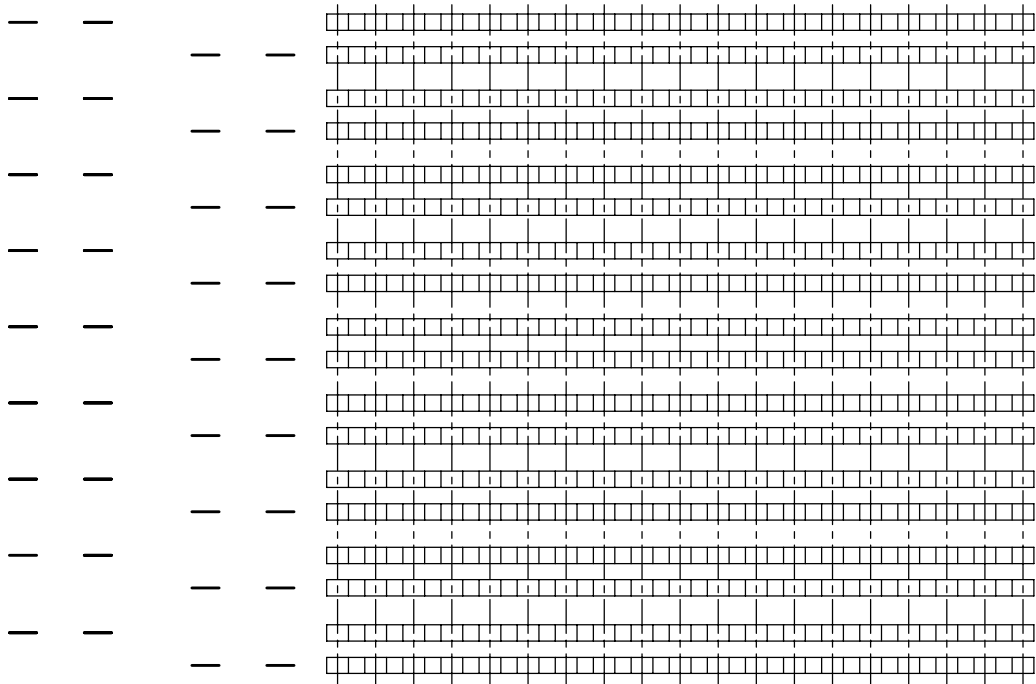
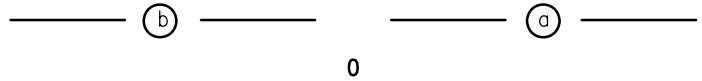
Kunde:  
Customer:

Zeichnungs-Nr.:  
Drawing-Nr.:

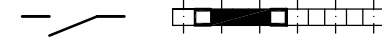


Meisterschalter NS00 nach M 9/8  
(Nichtzutreffendes bitte streichen)  
Rosette 72x72 mm, 96x96 mm  
Knebelgriff NW053  
Kugelgriff Edelstahl mit Anzeigespitze  
Drehknopf GN 762.2 mit Rosette 72x72 mm  
Drehknopf GN 526.1 mit Rosette 96x96 mm  
Schaltwinkel 30°, 45°, 60°, 90°  
mit/ohne Selbstrückgang

Controller NS00 according M 9/8  
(please mark)  
escutcheon plate 72x72 mm, 96x96 mm  
toggle handle NW053  
stainless steel handle  
knob GN 762.2 with escutcheon plate 72x72 mm  
knob GN 526.1 with escutcheon plate 96x96 mm  
switching angles 30°, 45°, 60°, 90°  
with/without spring return



Typ:



Kontaktüberlappung (Überschneidung)  
contact overlapping



Schwarzes Feld = Kontakt geschlossen  
black field = contact closed



**Spohn-Burkhardt** GmbH & Co.  
D-89143 Blaubeuren/Germany Mauergasse 5

Local Contact Fon:+86 21 50450977  
Mr.Gubin Fax:+86 21 50458162  
enquire@spobu.com.cn

**Meisterschalter**  
NS00

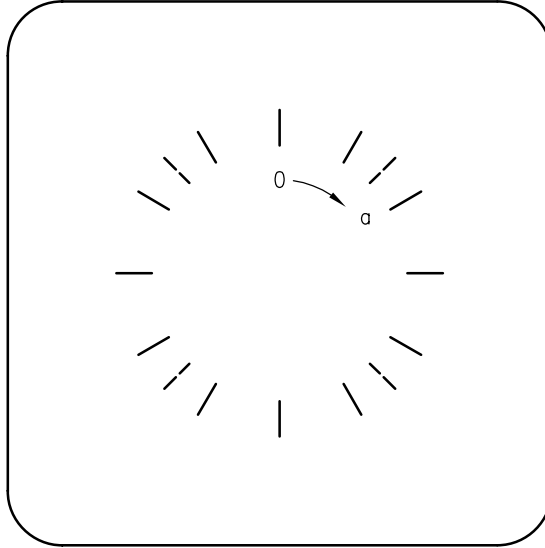
Controller  
NS00

**Tag:**  
Day:

**Name:**  
Name:

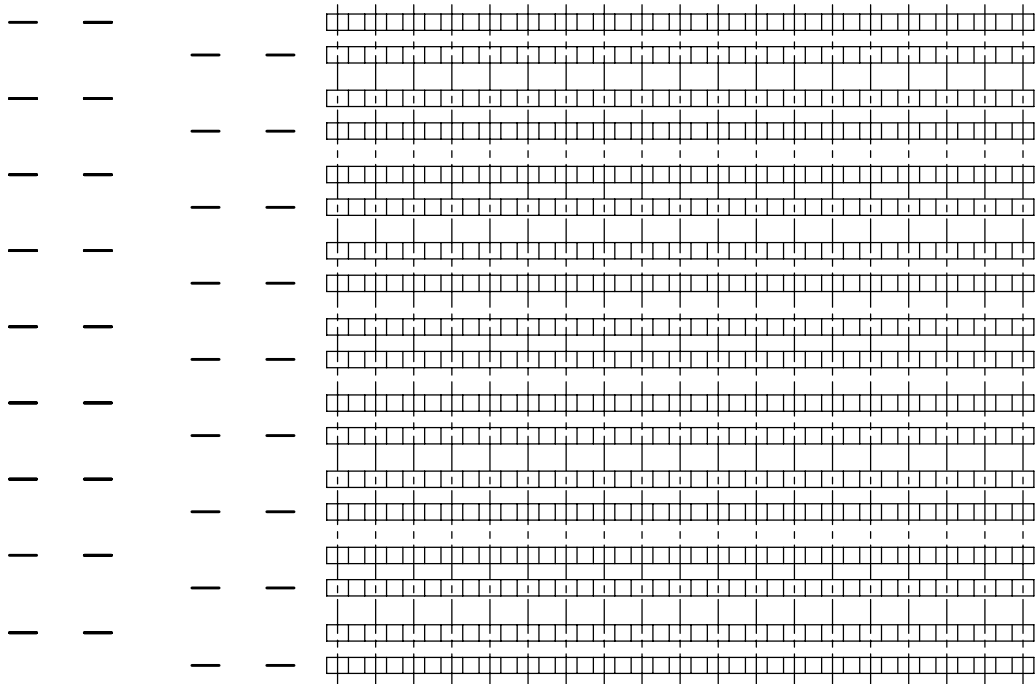
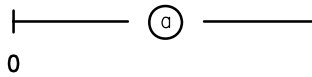
**Kunde:**  
Customer:

**Zeichnungs-Nr.:**  
Drawing-Nr.:

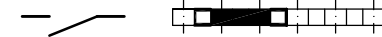


Meisterschalter NS00—nach M 9/8  
(Nichtzutreffendes bitte streichen)  
Rosette 72x72 mm, 96x96 mm  
Knebelgriff NW053  
Kugelgriff Edelstahl mit Anzeigespitze  
Drehknopf GN 762.2 mit Rosette 72x72 mm  
Drehknopf GN 526.1 mit Rosette 96x96 mm  
Schaltwinkel 30°, 45°, 60°, 90°  
mit/ohne Selbstrückgang

Controller NS00 according M 9/8  
(please mark)  
escutcheon plate 72x72 mm, 96x96 mm  
toggle handle NW053  
stainless steel handle  
knob GN 762.2 with escutcheon plate 72x72 mm  
knob GN 526.1 with escutcheon plate 96x96 mm  
switching angles 30°, 45°, 60°, 90°  
with / without spring return



Typ:



Kontaktüberlappung (Überschneidung)  
contact overlapping



Schwarzes Feld = Kontakt geschlossen  
black field = contact closed

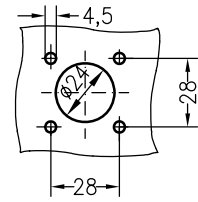
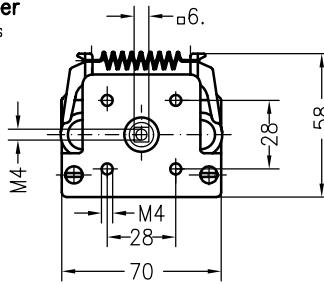
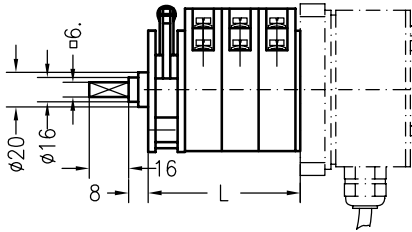


**Spohn-Burkhardt** GmbH & Co.

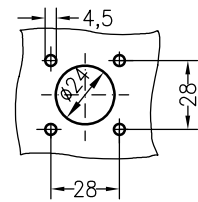
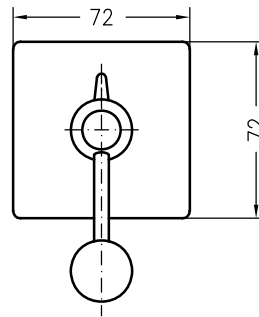
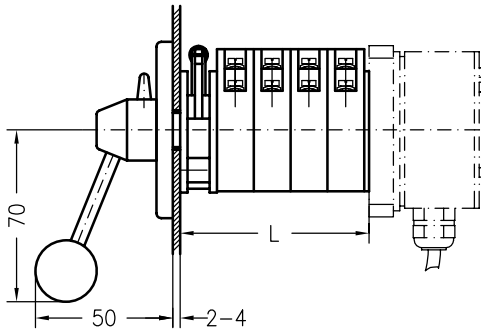
D-89143 Blaubeuren/Germany Mauergasse 5

Local Contact Fon:+86 21 50450977  
Mr.Gubin Fax:+86 21 50458162  
enquire@spobu.com.cn

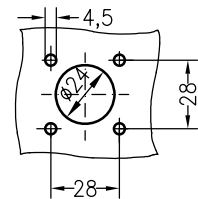
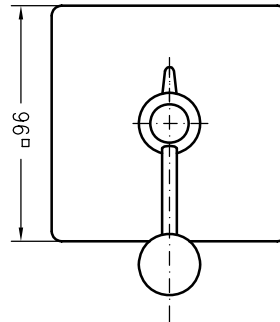
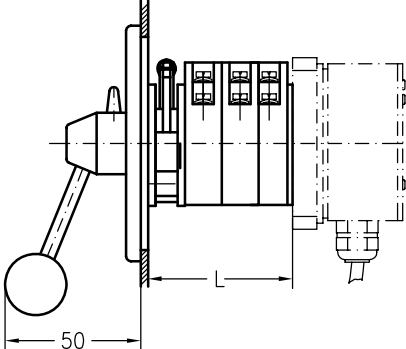
**Einsatzschalter NS00-**  
 switch

 Anzahl Doppelkontaktelemente number of double contacts  
 evtl. Kupplung für Geber attachment for transmitters

**Einsatzschalter mit Rosette 72x72 mm NS00-F**  
 switch with escutcheon 72x72 mm

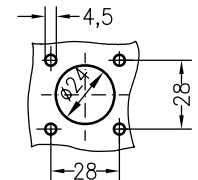
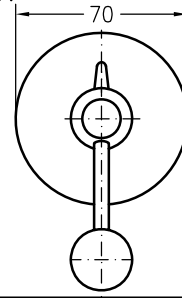
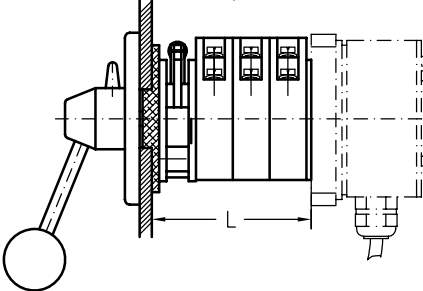
Anzahl Doppelkontaktelemente number of double contacts


**Einsatzschalter mit Rosette 96x96 mm NS00-FA**  
 switch with escutcheon 96x96

Anzahl Doppelkontaktelemente number of double contacts


**Einsatzschalter mit wasserdichter Rundrosette NS00-FOD**  
 switch with escutcheon plate 70 mm

Anzahl Doppelkontaktelemente number of double contacts


**Schutzart frontseitig IP56**

Degree of protection from the frontside IP56

Anzahl Doppelkontaktelemente number of double contacts

mit Rastung	NS001_	NS002_	NS003_	NS004_	NS005_	NS006_	NS007_	NS008_	NS009_	NS0010_
mit Rückzug	NS001_R		NS002_R	NS003_R	NS004_R	NS005_R	NS006_R	NS007_R	NS008_R	NS009_R
Länge L mm	35	50	65	80	95	110	125	140	155	170
Gewicht ~ g	590	680	770	860	950	1040	1130	1220	1310	1400

 mit zusätzlicher Reibbremse für Potentiometerbetrieb Länge L + 15 mm.  
 mit Doppelrastung L + 15 mm.
